

TECHNICAL DATA

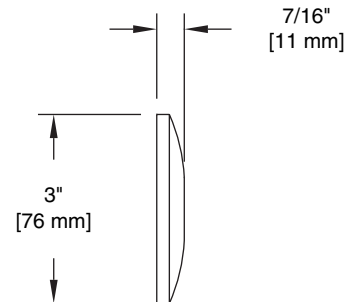
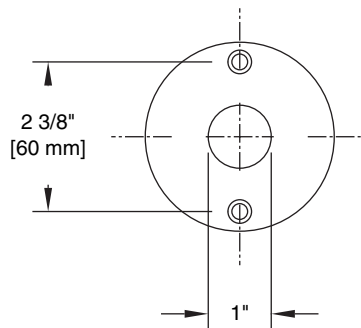
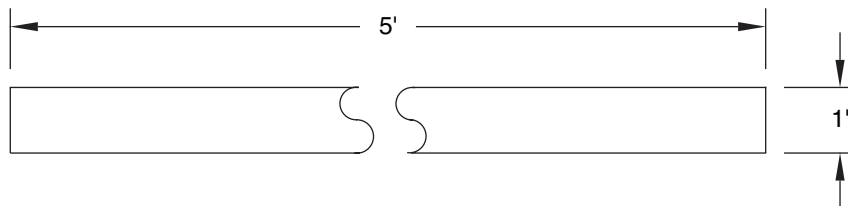
LIBERTY HARDWARE®
MANUFACTURING CORPORATION

A Masco Company

140 Business Park Drive • Winston-Salem, NC 27107
800.542.3789 • T 336.769.4077 • F 336.769.1839
www.libertyhardware.com

SHOWER ROD

161 & 162 Series



MATERIALS: 161 tubing is of 1" O.D. x .035 (20 gauge) seamless type 304 polished stainless steel. 162 tubing is of 1" O.D. x .035 (20 gauge) seamless type 304 satin stainless steel. Flanges are of 20 gauge type 304 polished or satin stainless steel.

INSTALLATION: Install wall flanges and rod with 4-#10 x 2" ovalhead stainless steel screws provided. Wood blocking is preferable behind all wall surfaces. If wood blocking is not available, the following optional fasteners are suggested:

Tile/Masonry - Plastic or lead anchors
Plaster/Drywall - Toggle Bolts

SPECIFICATION: Surface mounted shower rod shall be model _____ (fill in model number and length) by Liberty Hardware Manufacturing Corporation.